

Please check the examination details below before entering your candidate information

Candidate Name

Class

Section

BLOOM Science
Olympiad (BSO)
Question Paper 2023-24

Class
4

Total Questions **35 + 3** (Tie-Breaking Section)

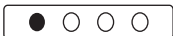
Total Time Allotted :
60 minutes

Total Marks
35

Instructions

1. There are **35 Multiple Choice Questions** in this booklet having 4 options out of which **ONLY ONE** is correct.
2. 1 Mark will be allotted for each correct answer.
3. All questions are compulsory. There is **NO negative** marking for incorrect answers.
4. Total time allotted to complete the paper is 60 minutes.
5. Please fill in your details in the space provided on this page before attempting the paper.

OMR Sheet Instructions

1. Before starting the paper, fill in all the details in the OMR Sheet.
2. Additional 10 minutes will be provided to fill up the OMR sheet, before the start of the exam.
3. Use HB Pencil to darken the circle of the correct Option in OMR sheet. The correct way to darken the circle in OMR sheet is shown below.

4. Use black or blue ball point pen/HB pencil to fill the information in the OMR sheet. Partially filled OMR sheet will not be checked.
5. Return the OMR sheet to the invigilator after the exam.

CODE #1

SC4



BLOOM CAP
Founded by |  **arihant**

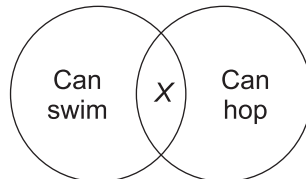
Bloom Science Olympiad Class 4

1. is a saprotrophs (plant).

- (a) Venus flytrap
(c) *Cactus*

- (b) Coconut
(d) Mushroom

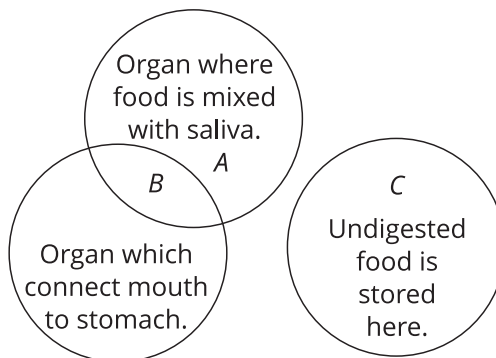
2. Refer to given Venn diagram and choose the correct option for X.



- (a) Swan
(c) Frog

- (b) Duck
(d) Rabbit

3. Which of the following labelled areas in the given Venn diagram represents the large intestine?



(a) A

(b) B

(c) A and B

(d) C

4. Match the following columns.

Column I (Methods of cooking)		Column II (Food items)	
A.	Boiling	1.	Samosa
B.	Baking	2.	Rice
C.	Frying	3.	Bread
D.	Roasting	4.	Chapati

Codes

- A B C D
(a) 2 4 1 3
(c) 3 1 4 2

- A B C D
(b) 2 3 1 4
(d) 2 3 4 1

5. Birds sit on their eggs to keep them warm. This process is known as

- (a) moulting (b) hatching
(c) incubation (d) warming

6. Which of the following statement is incorrectly written?

- (a) The capacity of bottle is 2 L. (b) The bag of rice weighs 10 kg.
(c) The capacity of water tank is 500 kg. (d) Iron dust weighs 75 kg.

7. is the force which stops the movement of a body when the body is in contact with a rough surface.

- (a) Work (b) Energy
(c) Friction (d) Tools

8. I am the food factory of a plant. I have veins but there is no blood. My veins help in transportation of water, minerals and prepared food. Who am I ?

- (a) Stem (b) Flower
(c) Leaf (d) Root

9. Match the following organisms with their young ones.

	Organisms		Young ones
A.	Cockroach	1.	Tadpole
B.	Butterfly	2.	Chick
C.	Frog	3.	Nymph
D.	Bird	4.	Cocoon

Codes

- A B C D
(a) 4 1 2 3
(c) 2 4 1 3

- A B C D
(b) 3 4 1 2
(d) 1 2 3 4

10. Three statements are made by Deepika. Choose the correct ones.

- (i) Saliva is mainly water.
(ii) Saliva makes it easier for us to swallow our food.
(iii) Saliva softens the food.
(a) (i) and (ii) (b) (ii) and (iii)
(c) (i) and (iii) (d) (i), (ii) and (iii)

11. A camel lives in the desert, a hot and dry place that gets very little rainfall. Which of the following is not their adaptation to survive in such conditions?

- (a) They can store food in form of fat in its hump.
(b) They have thick lips, so it can eat prickly desert plants without feeling pain.
(c) They have black skin colour.
(d) They have long eyelashes and extra transparent eyelid to get rid of sand of the desert.

12. Choose the incorrect statements.

- I. In an adult human, there are 8 incisors for cutting the food.
- II. Canines are tearing teeth, they are present in two pairs.
- III. Premolar are crushing teeth, they are 10 in number in an adult human.

- (a) Only I
 - (b) Only II
 - (c) Only III
 - (d) I and III
-

13. A liquid changes into a gas on and the process is called

- (a) heating, sublimation
 - (b) cooling, boiling
 - (c) heating, boiling
 - (d) cooling, condensation
-

14. Which simple machine uses a grooved wheel and a rope to carry a load?

- (a) Lever
 - (b) Inclined plane
 - (c) Wheel and axle
 - (d) Pulley
-

15. In which form does the plant store its extra food?

- (a) Glucose
 - (b) Simple sugar
 - (c) Starch
 - (d) Both (a) and (c)
-

16. Proteins are broken into simple substances in which of the following organ?

- (a) Food pipe
 - (b) Large intestine
 - (c) Stomach
 - (d) Mouth
-

17. carries oxygen to all parts of the body.

- (a) Hand
 - (b) Mouth
 - (c) Food
 - (d) Blood
-

18. Pickling is a method of preserving food by

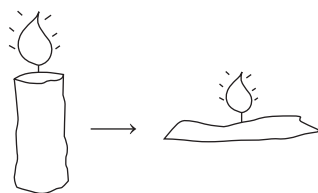
- (a) immersing in vinegar
 - (b) drying
 - (c) boiling
 - (d) adding water
-

19. I'm white but, I'm not snow.

I like to swim, but I'm not a fish.
I'm a large mammal, but I'm not a whale.
I'm furry, but I'm not a dog.
I live near the North-pole, but I'm not santa.
Who am I?

- (a) Penguin
- (b) Polar bear
- (c) Arctic fox
- (d) Seals

20. The given picture shows the process of



- (a) freezing
(b) melting
(c) evaporation
(d) condensation

21. Which of the following statement is correct about contamination?

- (a) It is caused by the entry of germs by an insect bite.
(b) It is caused by the entry of germs by an animal bite.
(c) It is caused by the entry of germs into drinking water or edible foods.
(d) It is caused by the entry of germs from playing outside.

22. Which of the following is not an underwater plant?

- (a) *Hydrilla*
(b) Pitcher plant
(c) Tape grass
(d) Pond weed

23. Which of the following animals have limbs to swim in water and walk on land?

- (a) Frogs
(b) Toads
(c) Salamanders
(d) Pond weed

24. Which system do heart belong to?

- (a) Respiratory
(b) Circulatory
(c) Digestive
(d) Nervous

25. Which of the following food components are called protective foods?

- (a) Proteins
(b) Carbohydrates
(c) Fats and carbohydrates
(d) Vitamins and minerals

26. are very small plants which grow in mild conditions that is neither too dry or too wet. They need a little amount of water.

- (a) Venus flytrap
(b) *Hydrilla*
(c) Grasses
(d) Mango tree

27. Which of the following group of living things have gills?

- (a) Fishes
(b) Penguins
(c) Rats
(d) Elephants

28. X enables us to do work. There are many forms of X. What is X ?

- (a) Energy
(b) Sun
(c) Heat
(d) Sound

29. In which way is the food prepared by plant not used?

- (a) Some food is used by plants to grow
- (b) Some food is used by plants to repair damaged parts
- (c) Some food is stored as starch and eaten by animals and humans
- (d) Some food is stored as protein

30. Asma made a cup of tea for herself. But her phone rang and she started talking on the phone. Mean while she covered her mug of tea with a lid. After ten minutes, she removed the lid to drink tea. She observed small water droplets on the inner side of the lid.

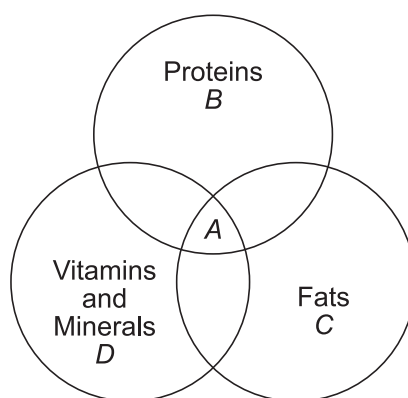
The process taking place here is

- (a) melting
- (b) precipitation
- (c) evaporation
- (d) condensation

31. How many pairs of ribs are present in human skeleton system?

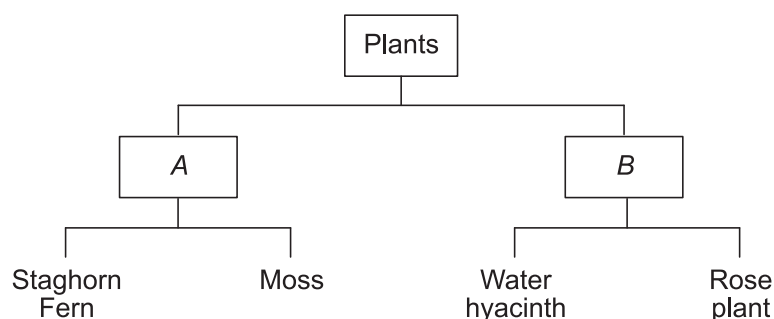
- (a) 12
- (b) 10
- (c) 15
- (d) 8

32. Which of the following labelled areas in the given Venn diagram represents the milk?



- (a) A
- (b) B
- (c) C
- (d) D

33. Read the chart given below and identify the suitable heading for A and B.



<i>A</i>	<i>B</i>
(a) Poisonous	Non-poisonous
(b) Fungi	Plant
(c) Live on land	Live in water
(d) Non-flowering	Flowering

34. Which of following substance has lower melting point than ice?

- | | |
|---------------|--------------------|
| (a) Aluminium | (b) Salt |
| (c) Iron | (d) Carbon dioxide |
-

35. A ball is thrown by a boy. The ball rolls on the ground upto some distance and stops. The force, which stops the ball is

- (a) muscular force
 (b) gravitational force
 (c) mechanical force
 (d) frictional force

Tie-Breaking Section

Instructions

- This section consists of 3 questions.
 - The score achieved in this section will not be included in the total marks.
 - If overall marks of two or more students are same, winner will be decided based on the score in this section.
 - Participation in this section is optional, and students may choose to attempt it or not.
-

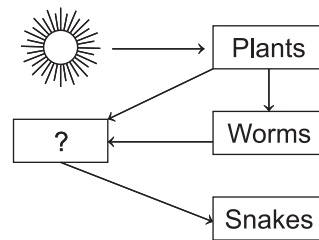
1. Write 'T' for correct statement and 'F' for incorrect statement.

- Friction develops when two things are kept apart.
- In order to move an object, the push or pull should be greater than friction.
- We can walk without friction.
- Friction slows down movements.

Codes

- | | |
|-------------|-------------|
| 1 2 3 4 | 1 2 3 4 |
| (a) F T F T | (b) F F T F |
| (c) T F F T | (d) F F T T |

2. Which of the following can be placed in the empty box to complete the given food web?



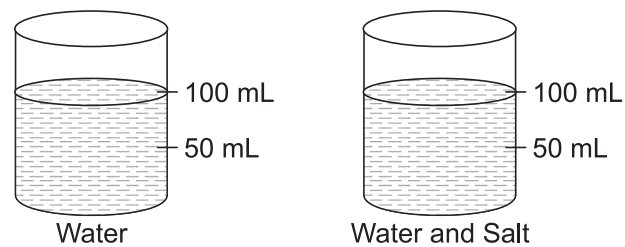
(a) Tiger

(b) Hen

(c) Man

(d) Vulture

3. Rupali took a 100 mL of water in a beaker and dissolved three teaspoon full of salt in it. When she checked the volume, the volume remains same as 100 mL. This is because



(a) salt evaporates

(b) salt destroyed into gas

(c) salt occupied the empty spaces in between the particles of water

(d) All of the above